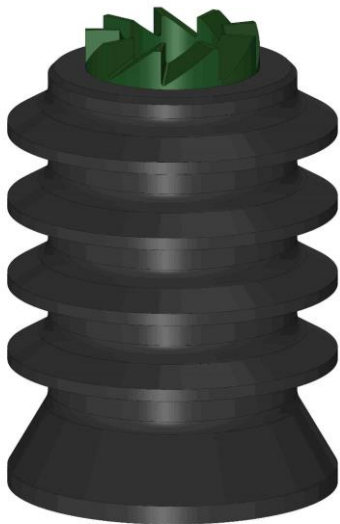


Non-Rotating Cementing Plug

Non rotating cementing plugs have been designed to decrease drill out time. This series of cementing plug uses reinforced locking teeth build into the plugs, which lock together between the plug and the float equipment to eliminate rotation of the plug during drill out. The body of the plug is manufactured using a plastic core which eliminate aluminium and large mass of rubber found in conventional cementing plugs are completely P.D.C drillable.

Plugs are available in natural / Nitrile / HNBR / AFLAS (very high temperature) covering based on specific requirements.

Available in 4 1/2" to 20" sizes. Any special sizes can be made available on request.



1. TOP PLUG



2. BOTTOM PLUG