

Guide Shoe

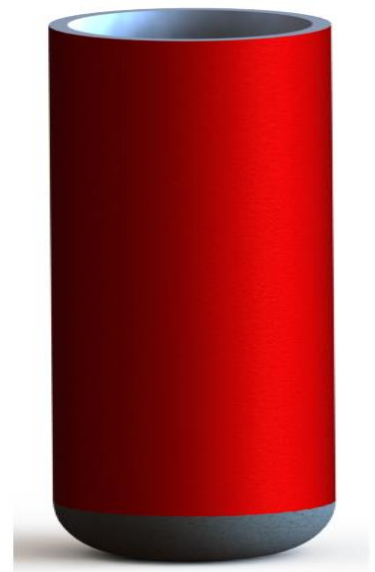
A guide shoe is installed on the bottom joint of casing and is usually combined with a float collar in the casing string for conventional cementing operations. The guide shoe thru-bore allows conversion balls, tubes and debris to exit the casing without obstruction.

Features

- Rounded cement bull nose allows for smooth running and provides the ability to guide past ledges

Composite eccentric nose available

- Load bearing capability for setting on bottom
- Guide Shoe is PDC drillable
- Side ports
- Down-jets



Available sizes 4 ½” to 20” and any special sizes can be custom made as required.