

## Float Shoe

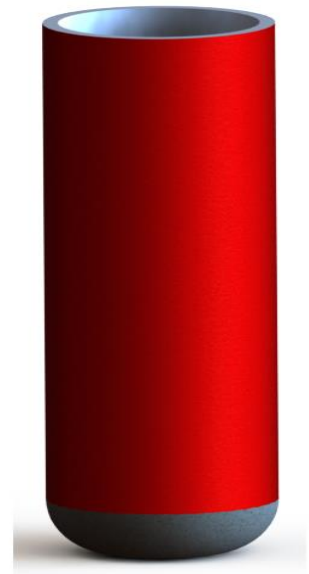
Float shoes contain a backpressure valve that prevents fluids from entering the casing while the pipe is lowered into the hole and prevents cement from flowing back into the casing after placement, while enabling circulation down through the casing.

## Types

- Single Valve Float Shoe
- Double Valve Float Shoe
- Non-Rotating Float Shoe
- Stab-In Type Float Shoe
- Eccentric Nose Float Shoe
- Side Jet, Up-Jet, Down Jet Float Shoe

## Features

- Design is particularly suited to vertical, horizontal and deviational wells
- NR Valve is designed for HPHT conditions.
- Floats are spring-loaded, poppet-type valve or flapper type
- Floats are available with single or double poppet valve
- The float shoe also guides the casing toward the centre of the hole to minimize hitting rock ledges or washouts as the casing is run into the wellbore.



*Available sizes 4 ½” to 20” and any special sizes can be custom made as required.*