

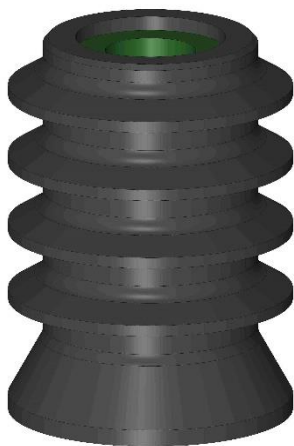
Convectional Cementing Plug

Cementing Plugs are engineered for reliability. The Top plug and Bottom Plug are of the same basic design with firm wiping action provided by five wiping surfaces. The top cementing plug has a solid body that provides positive indication of contact with the landing collar and bottom plug through an increase in pump pressure. The bottom cementing plug is launched ahead of the cement slurry to minimize contamination by fluids inside the casing prior to cementing.

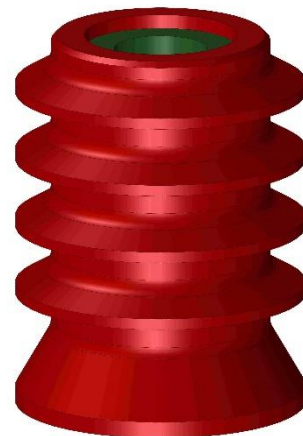
Convectional cementing plugs are PDC drillable.

Plugs are available in natural / Nitrile / HNBR / AFLAS (very high temperature) covering based on specific requirements.

Available in 4 1/2" to 20" sizes. Any special sizes can be made available on request.



1. TOP PLUG



2. BOTTOM PLUG