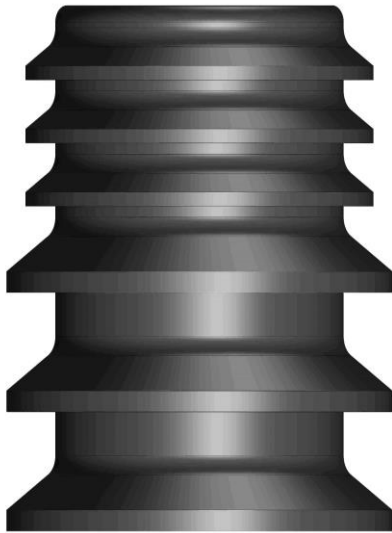


## Combination Cement Plug

Combination Cementing Plug is provided different sizes of rubber fins which help in wiping on the casing walls and assist in displacing the cement in one step. These combination cementing plugs are used in combination casing strings with two or more different casings or tubing. Combination cementing plugs are PDC drillable. Plugs are available in natural / Nitrile / HNBR / AFLAS (very high temperature) covering based on specific requirements.

*Available in 4 1/2" to 20" sizes. Any special sizes can be made available on request.*



1. TOP PLUG



2. BOTTOM PLUG